

Creating your own graphical body wrap for the EZ-Cart

The following guide will show you how to create your graphical body wrap for your EZ-Cart. You will need to be comfortable using the graphic design program, Adobe Illustrator. You will use the template on the 3rd page of this guide to map your artwork to the appropriate panels.

1

Using the supplied templates, create your artwork at 100% of final size in Adobe Illustrator .eps or Adobe In Design.

2

Create and map your artwork for each of the five panels as shown on page 2.

When working on your canopy, ensure you rotate your artwork so it reads properly when viewed from either side of the cart.

3

Add 1/2" bleed on all sides of the panels.

4

The file should be set in CMYK. Save all fronts and text in **OUTLINE**. If importing Photoshop images, the resolution should be a minimum of 150 dpi at 100% of final size.

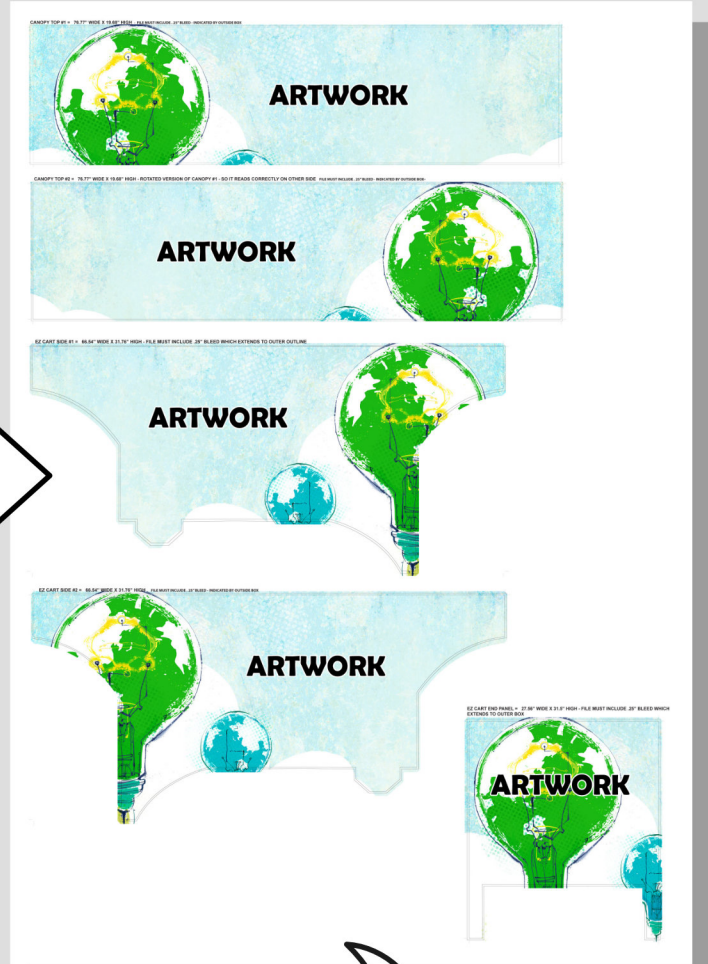
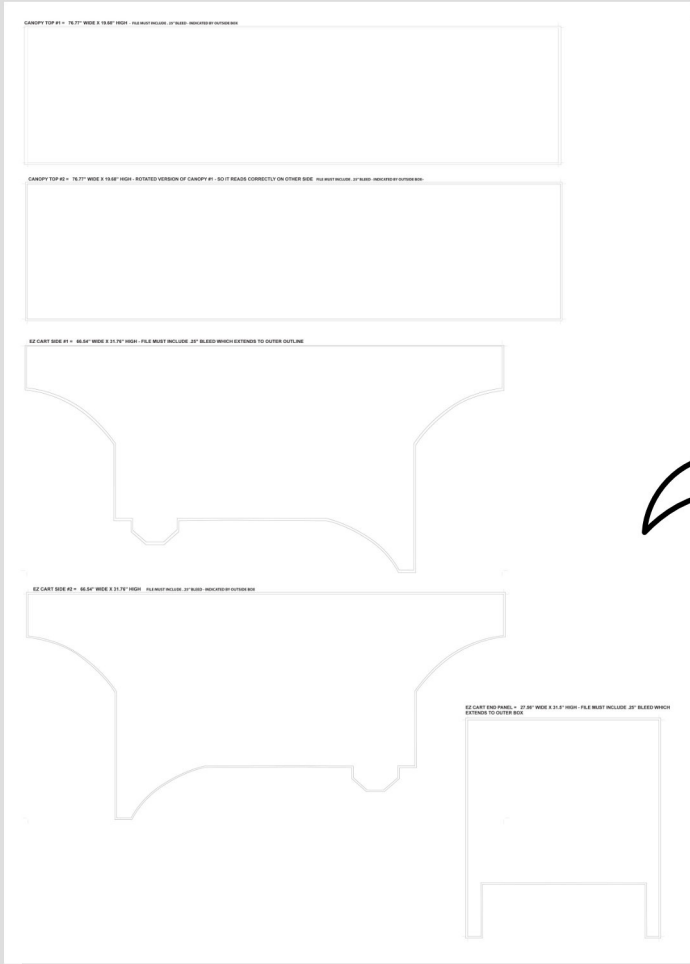
5

Save your final file as an Adobe. Pdf file save for **HIGH QUALITY PRINT**.

6

E-mail your template to: graphics@cart-king.com

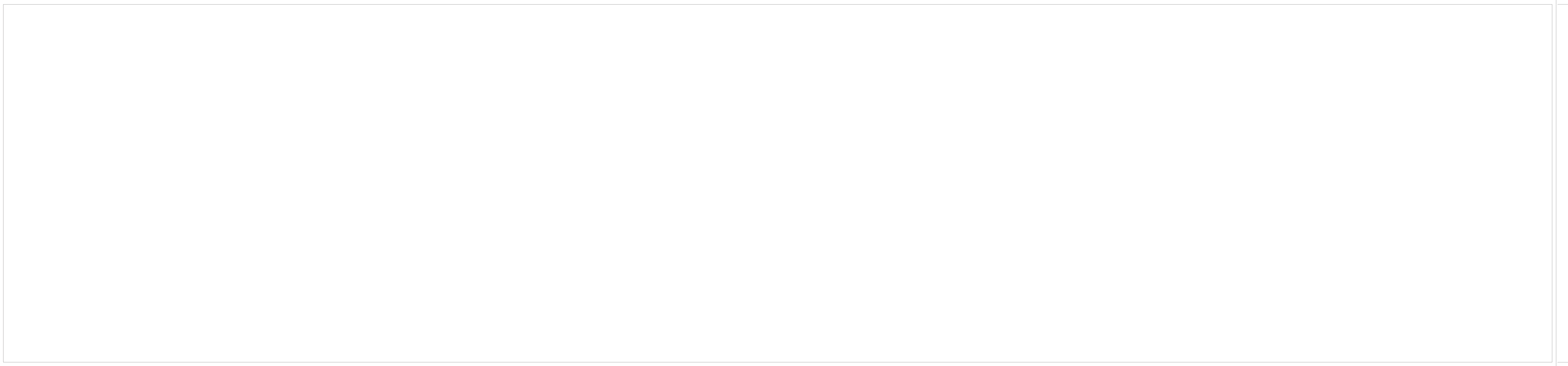
FINISHED!



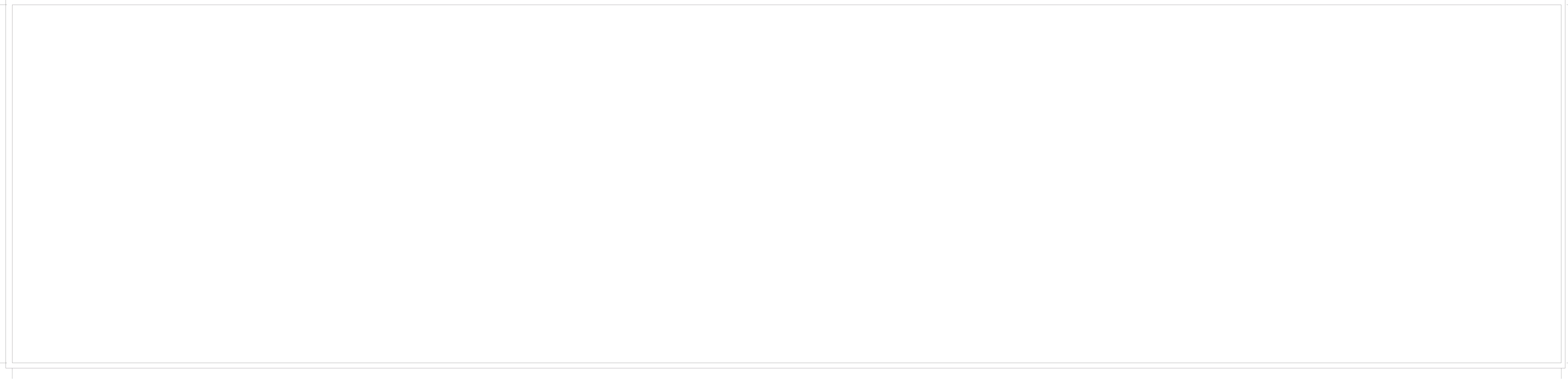
Upload



CANOPY TOP #1 = TRIM SIZE = 73.5" WIDE X 17" HIGH GRAPHIC FILE MUST EXTEND TO OUTSIDE BOX



CANOPY TOP #1 = TRIM SIZE = 73.5" WIDE X 17" HIGH GRAPHIC FILE MUST EXTEND TO OUTSIDE BOX



EZ CART SIDE #1 = 65.375" WIDE X 32.75" HIGH - FILE MUST EXCEED RED OUTLINE

**SAFE AREA - LOGOS OR TEXT SHOULD NOT EXCEED
THE SHADED AREA - PLEASE DELETE THIS SHADED AREA
BEFORE SENDING FINAL FILES**

EZ CART SIDE #1 = 65.375" WIDE X 32.75" HIGH - FILE MUST EXCEED RED OUTLINE

**SAFE AREA - LOGOS OR TEXT SHOULD NOT EXCEED
THE SHADED AREA - PLEASE DELETE THIS SHADED AREA
BEFORE SENDING FINAL FILES**

**EZ CART END PANEL = TRIM SIZE = 23.75" WIDE X 23.75" HIGH -
GRAPHIC FILE MUST EXTEND TO OUTSIDE BOX**

