

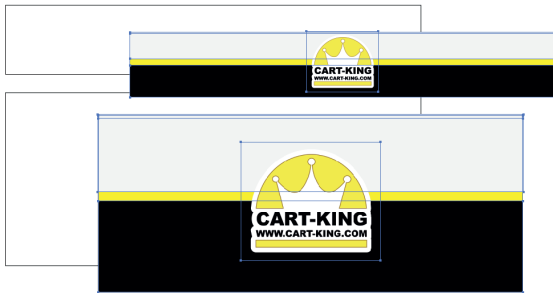
Creating your own graphical body wrap for EZ-Kiosk

The following guide will show you how to create your graphical body wrap for your EZ-Kiosk. You will need to be comfortable using a graphic design program, such as Corel Draw, Adobe Illustrator or Adobe Photoshop. You will use the template on the second page of this guide to map your artwork to the appropriate panels. The template contains the left, right and front panels as well as the mirrored canopy panels.

STEP 1

Open the template file in your graphic program of choice. If possible, place and lock the template on a separate layer.

STEP 2



Create and map your artwork for the front panels.
Note: any artwork falling outside of the outline will be cut off.

STEP 3



Create and map your artwork for the side panels.

STEP 5

We Require:

- A. Adobe Illustrated or PDF files
- B. Files to be saved in CMYK format
- C. Photographic or Bitmap files at 400 DPI

Send the file to:

info@cart-king.com



FINISHED



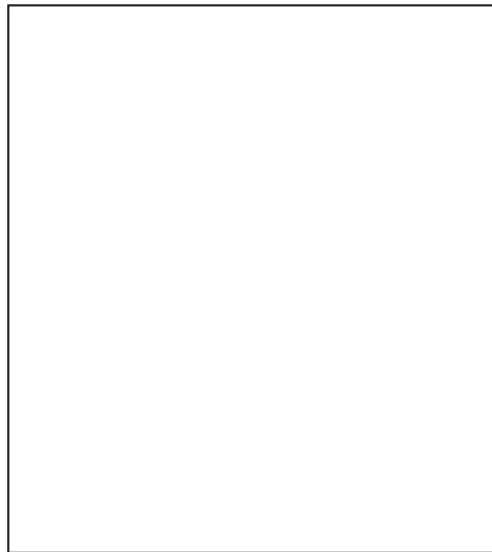
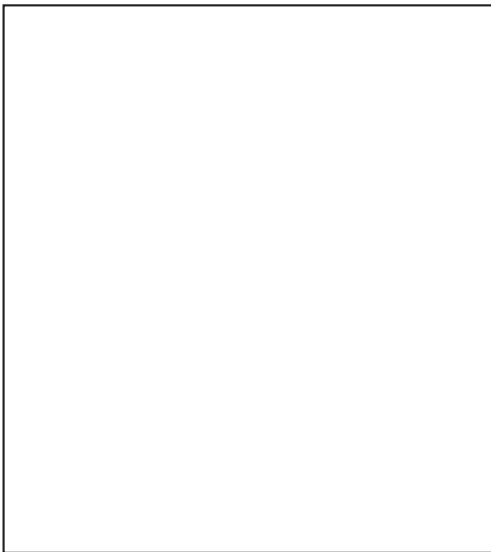
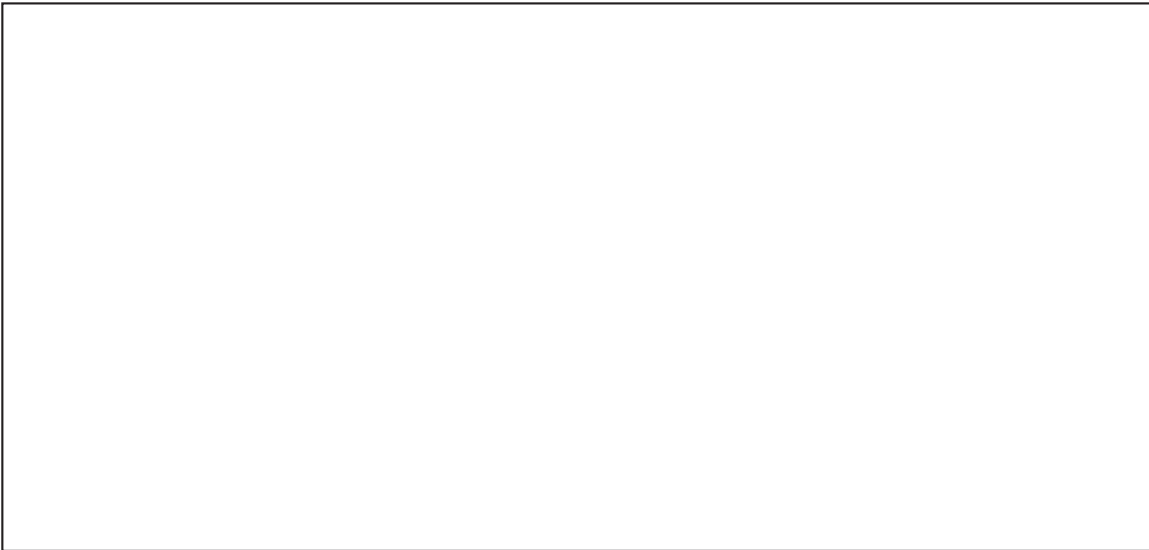
Cart-King will create a mock-up from the artwork supplied on the PDF. Your cart will look something like this.

Tips to remember:

- Copy or place template on separate layer.
- Use vector or line-art for best results.
- If using bitmap or photographic images keep at 400 dpi.

Send the file to:

info@cart-king.com



1-877-986-7771
www.cart-king.com
info@cart-king.com

